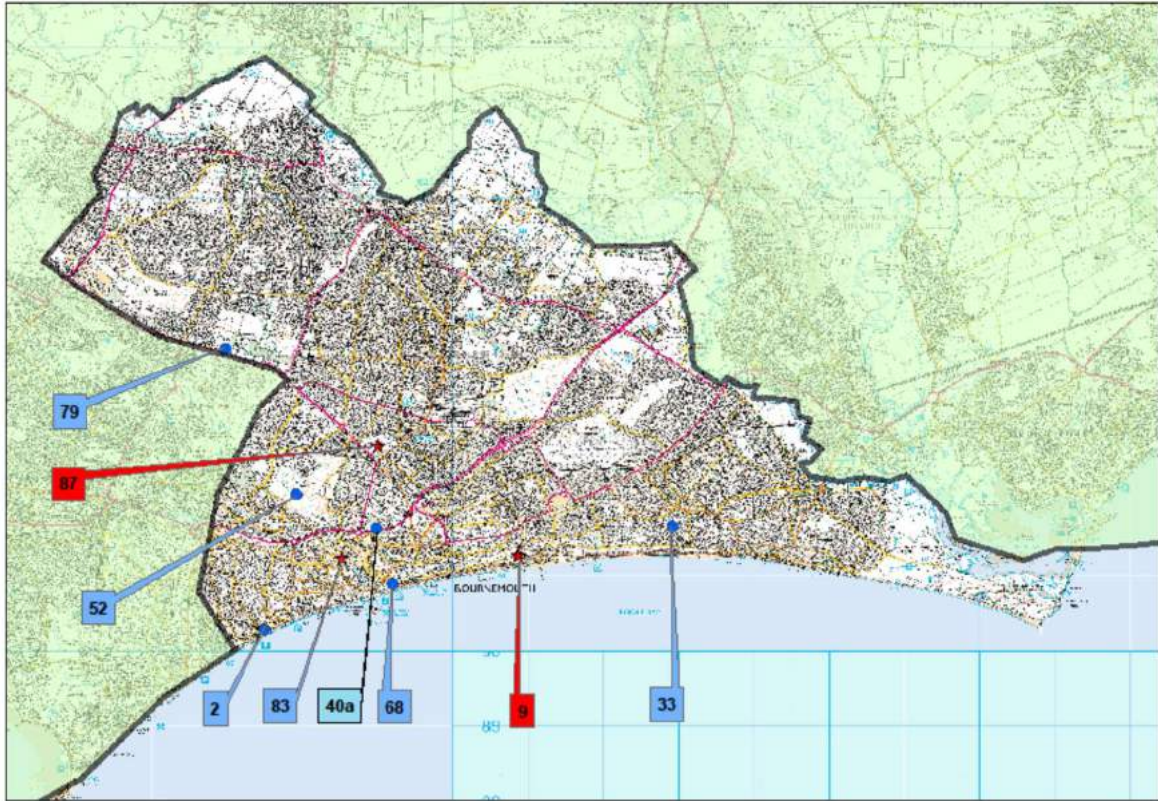


BOURNEMOUTH



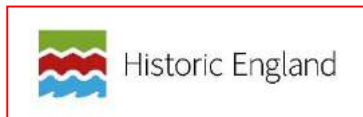
Bournemouth

Historic England Register

Map No.	Page
83 Upper, Central and Lower Pleasure Gardens ...	24
87 Wimborne Road Cemetery	26

Dorset Gardens Trust List of Sites of Historical and Landscape Significance

2 Alum Chine Tropical Gardens.....	28
9 Boscombe Chine Gardens	30
33 Fisherman's Walk	32
40a Horseshoe Common.....	34
52 Meyrick Park	36
68 Russell-Cotes Museum Gardens.....	38
79 Talbot Village	40



Upper, Central and Lower Pleasure Gardens

Address:	c/o The Town Hall, Bournemouth, Dorset BH2 6DY		
District:	Bournemouth Borough Council	Ward:	Central
Map Series:	Landranger	Map Sheet:	195
		Grid Reference:	086 912
Area (ha):	17.5 ha		
Site owner(s):	Bournemouth Borough Council		
Designation:	Historic England Grade II		
Site designers:	Philip H. Tree		

Brief description of site:

A series of 3 gardens are centred around the Bourne Stream which runs through a valley for 3 kilometers in a south easterly direction from the Coy Pond before disgorging into the sea by Bournemouth Pier. They are now quite heavily wooded and this becomes denser the further one goes from the sea. In 1871 a competition for the design of the Lower Pleasure Gardens was won by Philip H Tree and new walks, plantations and flowerbeds were laid out in the gardenesque style promoted by J.C. Loudon. In the 1920s alterations included the construction of the Pavilion, a large rock garden and a series of waterfalls. The gardens are well maintained with many choice trees and shrubs dating from the original design.

The lower garden is separated from the central and upper gardens by The Square, a partly pedestrianised public space.

Brief history of site:

This area of the coast, until the 18th C, was heathland and for the most part uninhabited. In 1811 Lewis Tregonwell bought 8.5 acres of heath and decided to build a house which is now part of the Exeter Hotel. This action was deemed to be the beginning of the development of Bournemouth.

The lower pleasure gardens were laid out for the Meyrick family (Landowners and Lords of the Manor) in the 1840's, they later became the property of the town in 1873. The Central and Upper Pleasure gardens were the property of the Durant family and were acquired by the town and laid out 1871-89 by the Bournemouth Improvement Commissioners. The original villas that bordered the gardens have largely been replaced with flats and small houses. There has been recent restoration and replanting.

Heritage Category:
Park and Garden
List Entry No:
1000724
Grade:
II*

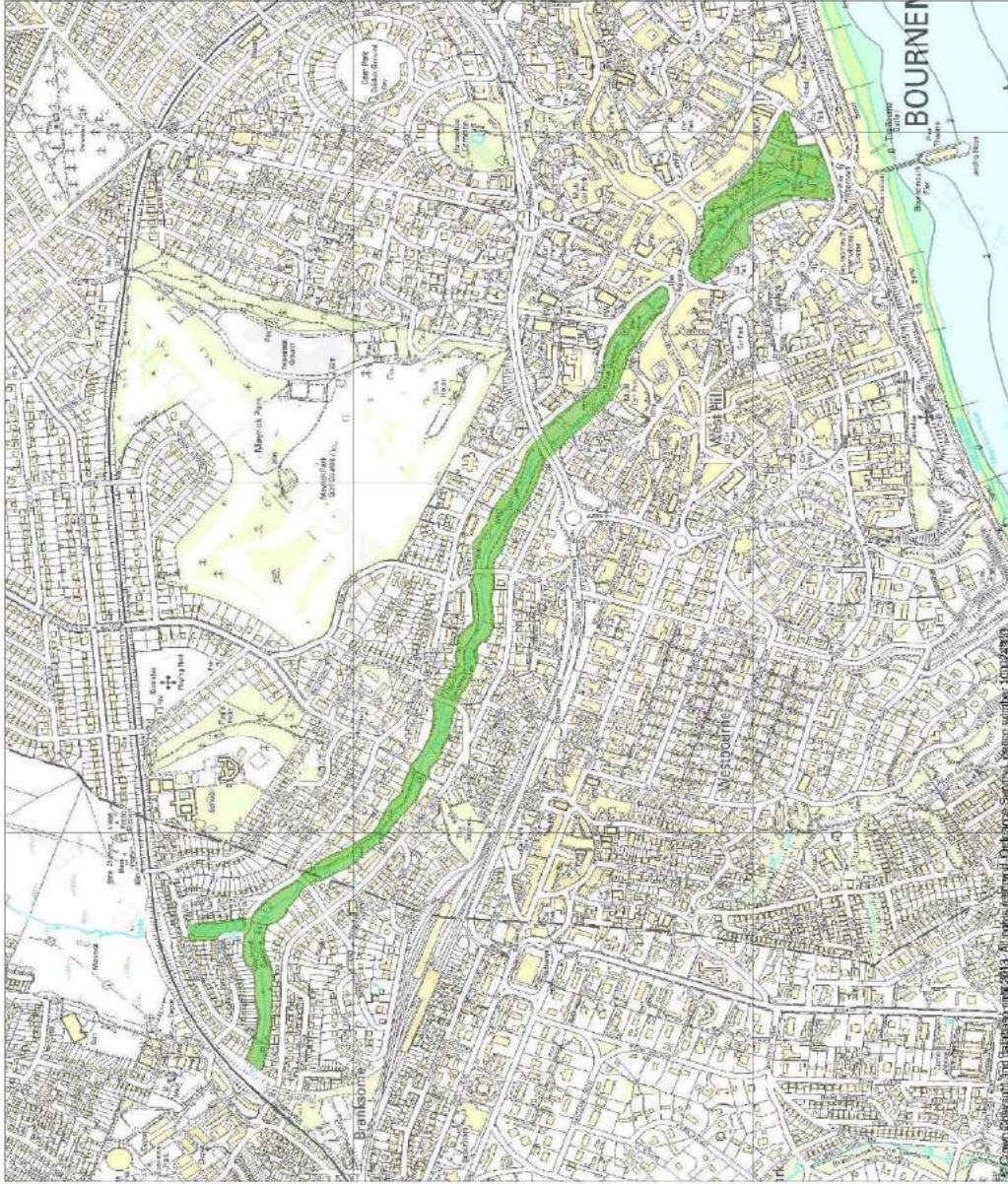
County:
District: Bournemouth, Poole
Parish: Non Civil Parish, Non Civil Parish

Each official record of a registered garden or other land contains a map. The map here has been translated from the official map and that process may have introduced inaccuracies. For more information on the map, or for a copy of the original map, please contact the records office. Further information can be obtained from English Heritage.

This map was delivered electronically and when printed may not be to scale and may be subject to variations. The map and grid references are for information only and should be used in conjunction with other information in the record.

List Entry NGR: SZ 07439 91736
Map Scale: 1:10000
Print Date: 3 June 2013


ENGLISH HERITAGE
191Adeane Square, 188-192, Highbury, London, N5 2RU
Tel: 020 7932 3200 www.english-heritage.org.uk



This is an A3 sized map and should be printed full size at A3 with no page scaling set.

Name: UPPER, CENTRAL AND LOWER PLEASURE GARDENS, BOURNE MOUTH



Historic England

Wimborne Road Cemetery

Address:	Manager and Registrar, Bournemouth Crematorium, Strouden Avenue Bournemouth, Dorset BH8 9HX				
District:	Bournemouth Borough Council	Ward:	Talbot and Branksome Woods		
Map Series:	Landranger	Map Sheet:	195	Grid Reference:	086 926
Area (ha):	9.5 ha				
Site owner(s):	Bournemouth Borough Council				
Designation:	Historic England Register grade II*				
Site designers:	Christopher Crabbe Creeke				

Brief description of site:

Wimborne Road Cemetery is on a level diamond shaped plot of 9.5 hectares bounded on 3 sides by roads and the fourth by housing. The cemetery is approached from the south via Wimborne Road, the entrance is at the southern base of the diamond at a point where the roads make a 'Y' formation. The drive continues into the cemetery through wrought iron gates and along a drive lined with Araucara araucana (Monkey Puzzle Trees) and variegated holly trees to the Gothic style Mortuary Chapel.

Brief history of site:

Due to the rapid expansion of Bournemouth in the 19th C extra space was required for burials and land was acquired from the Dean family (major landholders in Bournemouth at the time). The architect Christopher Crabbe Creeke was commissioned to design the cemetery including the walls, gates and chapel. The works were completed in 1877. The main drive was originally fully lined with Monkey Puzzle (Araucaria araucana) trees and golden hollies. Three Mausoleums were constructed in the 19th C for local families of which two remain, one being for the Russell-Cotes family. The Chapel has been renovated in recent years and the trees replanted on the main drive following storm damage.

Heritage Category: Park and Garden
List Entry No : 1000726
Grade: II

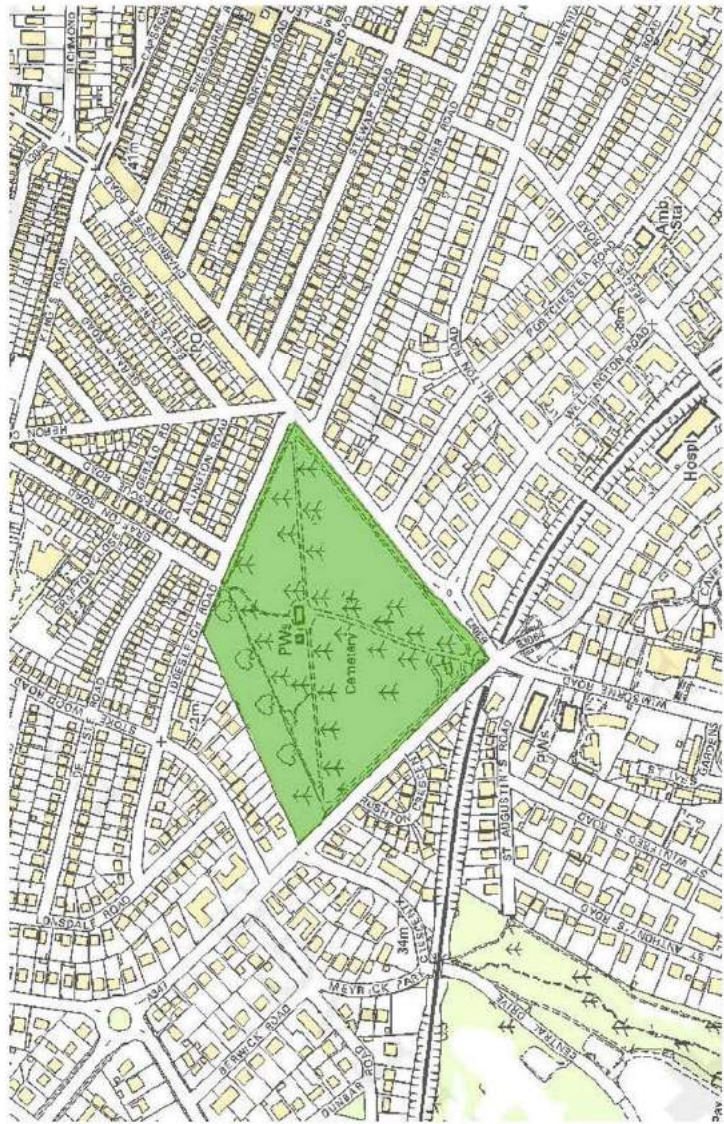
County:
District: Bournemouth
Parish: Non Civil Parish

Each official record of a registered garden or other land contains a map. The map here has been translated from the official map and that process may have introduced inaccuracies. Copies of maps that form part of the official record can be obtained from English Heritage.

This map was delivered electronically and when printed may not be to scale and may be subject to distortions. The map and grid references are for identification purposes only and must be read in conjunction with other information in the record.

List Entry NGR: SZ 09021 92696
Print Date: 3 June 2013


ENGLISH HERITAGE
1 Waterhouse Square, 138-142 Holborn, EC1N 2ST
Tel: 020 7873 3000 www.english-heritage.co.uk



Name: WIMBORNE ROAD CEMETERY, BOURNEMOUTH



Alum Chine Tropical Gardens

Address: c/o Bournemouth Borough Council, Bournemouth, Dorset. BH2 6DY

District: Bournemouth Borough Council **Ward:** Westbourne and Westcliff

Map Series: Landranger **Map Sheet:** 195 **Grid Reference:** 075 903

Area (ha): 7.33 ha

Site owner(s): Cooper Dean Estate leased to Bournemouth Borough Council

Designation: Dorset Gardens Trust Local List

Site designers: Not known

Brief description of site:

Alum Chine Gardens are a 'Y' shaped chine garden running inland from the sea towards Westbourne for about 1 km. At the sea entrance on the eastern side in an area where there are the remains of an alum quarry, the land is laid out as a Tropical Garden with meandering paths. The chine, as it proceeds towards Westbourne, becomes steeply sided with thick covering of trees and vegetation. The chine is crossed by three bridges.

Brief history of site:

Alum Chine apparently derives its name from attempts to mine alum and copper during the 16th C. It was then used by fishermen for boat storage. William Dean purchased this part of the West Cliff after the enclosures in 1805. Alum Chine was designated a public open space under the Open Spaces Act of 1906 although the land belongs to the Cooper Dean Estate and is leased to the Council.

The tropical gardens were laid out in the 1920s on the cliff face overlooking Poole Bay and were later described as 'luxuriant in growth with plenty of palms and yuccas' They became very overgrown until replanted in 1996.

The mixture of evergreen and deciduous planting was undertaken in the late 19th and early 20th C.

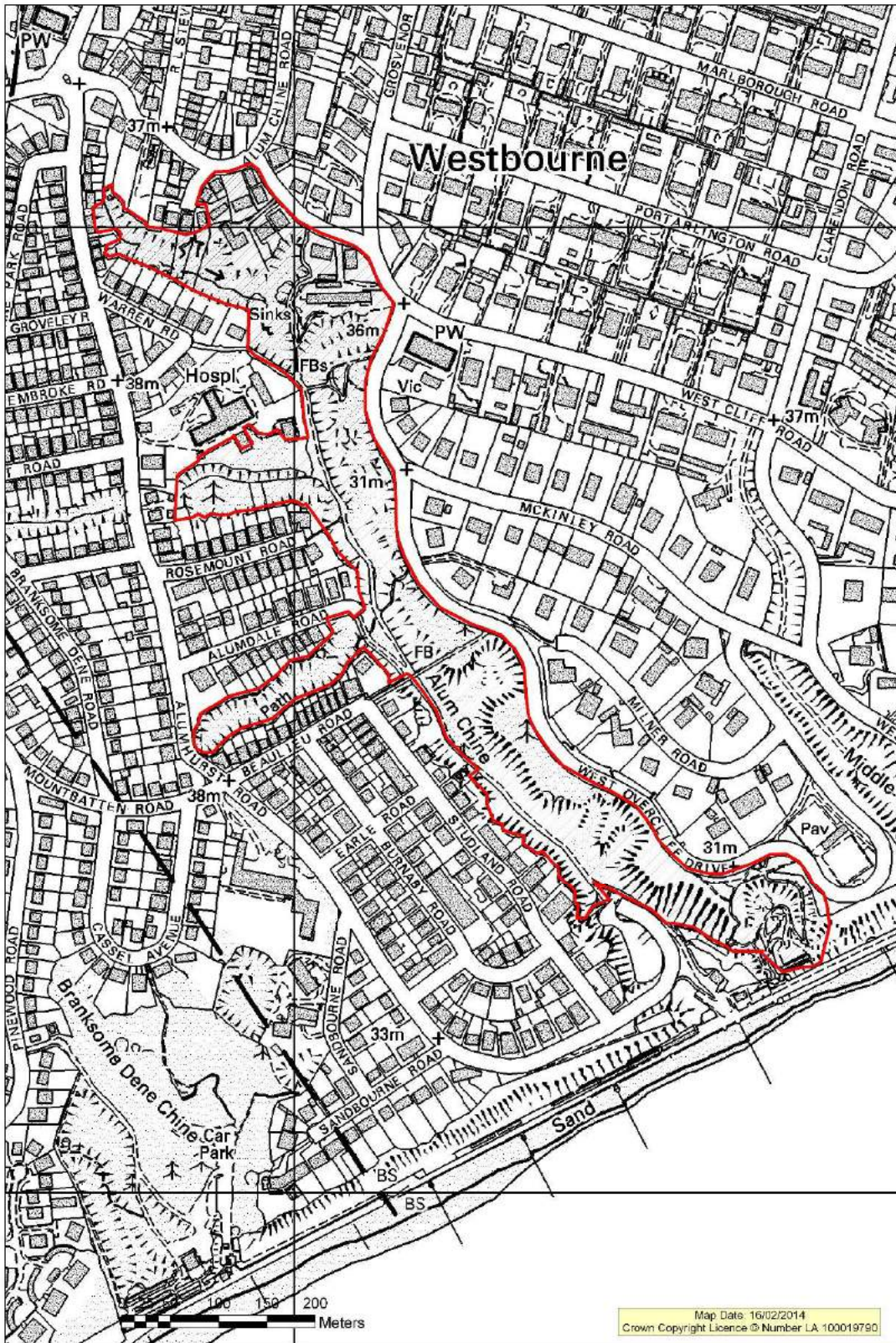
Significance:

A late 19th C landscape incorporating a tropical style garden laid out in the 1920's. This is a good example of a Chine (a steep-sided coastal gorge typically found on the south coast in Poole, Bournemouth, the Isle of Wight, Devon and Hampshire) which has been landscaped.

Sources:

Bournemouth Parks Survey report 2007

Alum Chine Tropical Gardens





Boscombe Chine Gardens

Address:	Christchurch Road, Bournemouth, Dorset				
District:	Bournemouth Borough Council	Ward:	Boscombe West		
Map Series:	Landranger	Map Sheet:	195	Grid Reference:	108 912
Area (ha):	4				
Site owner(s):	Bournemouth Borough Council				
Designation:	Dorset Gardens Trust Local List				
Site designers:	Site originally developed by Sir Henry Drummond-Wolff in the 1870's.				

Brief description of site:

Boscombe Chine Gardens are in a wooded chine running in a south easterly direction towards the sea and Boscombe Pier. The gardens are laid out with tennis courts, formal gardens, shelters, serpentine paths and plantings to enhance the natural contours of the chine.

Brief history of site:

The site was originally part of the Boscombe Spa Estate which was developed in the 19th C by Sir Henry Drummond-Wolff, the local MP, to be a high class villa suburb. In 1876 the tennis courts and rustic bridge were laid out. The site was subsequently leased to the Bournemouth Commissioners.

The gardens became increasingly neglected from the 1920's and in 2002 the Heritage Lottery Fund awarded Bournemouth Borough Council a grant to restore the gardens which was done in a number of phases.

Significance:

Originally laid out as part of a villa housing development in the 19th C. now notable for the important restored historic features characteristic of late Victorian and early 20th C seaside public recreation, with gardenesque as well as municipal styles of planting. The original historic features that now survive, include the north west lodge, formal bedding schemes and walks.

Sources:

Centre for the Conservation of Historic Parks and Gardens, site survey and recommendation by John Soane, 1985.

Nikolaus Pevsner and David Lloyd. *The Buildings of Hampshire and IoW, Penquin Books 1967*

Boscombe Chine Gardens



Crown Copyright © Licence no. LA100019790
 See full license by www.gov.uk/government/organisations/crown-copyright-licence
 THIS MAP IS NOT DEFINITIVE.

Crown Copyright © Licence Number LA 100019790.

Scale 1/3625

Date 27/3/2006

Centre = 410876 E 91297 N